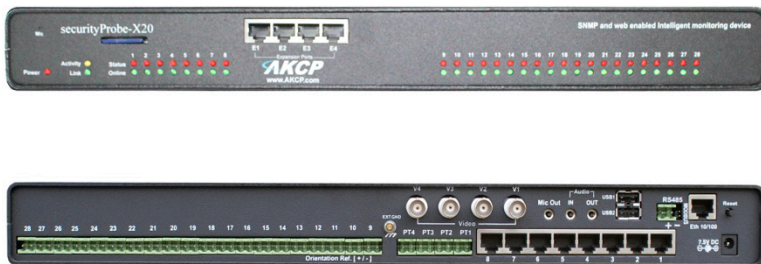


Sensor Control...

Access Control...

securityProbe-X20

SNMP-based Environmental and Security Monitoring Solution



Applications

Monitoring Solution for :-

- Data Center & Server Rooms
- Telecommunication Room
- Network Equipment
- Remote ATM
- Backup Power & Generators
- Air Conditioning
- Cryogenics & Food industry
- Warehousing
- Medical & Pharmaceutical applications
- Server Rack Monitoring
- Building & Real estate Management

**Is your system designed to control the unpredictable?
Does maintaining your infrastructure keep you on edge?**

securityProbe-X20 will monitor the physical environment and alert you of any disturbances, such as unauthorized intruders, security breaches, high temperatures, smoke, water leakages, power outages and much more.



Up to 4 remote controlled pan-and-tilt cameras, combined with the securityProbe-X20's software motion detection and a rich notification suite keeps you up to date at all times. E-mail, SMS, telephone call, web-browser, and other channels are available wherever you are, 24/7.

Features

- Full SNMP v1 v2 and v3 Compliant
- Email Notification
- Web Enabled - Embedded web server
- NMS Integration
- SNMP trap notification
- Connect 4 external cameras
- Linux Operating System
- 80 Virtual Sensors
- Built-in Graphing and Logging
- Platform Independent
- New faster CPU and Graphics card
- Built-in Pan tilt controller
- Supports Modbus Built in Nagios
- 20 Dry contact inputs
- Expandable function with additional Sensor and Dry Contact Modules



securityProbe-X20



Features

- Embedded web server displays sensor information and live video from connected cameras.
- Control PT cameras directly from the web interface.
- Record streaming video directly to remote servers or internal memory, or send live images to your own website.
- Connect up to 4 external cameras, and simultaneously display images up to 640x480 pixels resolution.
- Receive notifications of anomalous events via email, SMS / MMS, SNMP traps, and many more.
- Integrates with network management systems via SNMPv1 and encrypted SNMPv3.
- Stream video and sensor information directly to your cellphone or PDA.
- Ability to connect external GPRS/GSM modem, Bluetooth and WiFi USB adapters.
- Uses Linux operating system for maximum stability and flexibility.
- Virtual Sensors Feature to monitor power, Modbus, network devices, and other SNMP based equipment.
- Built-in graphing and data logging, internally or to a remote PC.
- Platform independent; free firmware upgrades and utilities from AKCP.
- Monitor up to 600 intelligent sensors using expansion modules (E-Opto 16 and E-sensor 8)
- Compatible with complete range of AKCP Intelligent sensors
- Full Modbus support : Modbus Master/Slave, Modbus RTU, Modbus over TCP/IP

The securityProbe-X20 combines all the advantages of the securityProbe 5E but with an additional 20x 2 wire dry contact inputs.

Built into a 1U rack mount box. The securityProbe-X20 has a Linux Operating System running with 520MHz CPU, 8 Megabytes of Flash memory and 128 Megabytes of SDRAM. An additional 2 Gigabytes SD card is installed to provide greater storage capacity. It is TCP/IP compliant and runs lighttpd web server including https (SSL), Bash, Perl, vi, Telnet, PHP, Email and Nagios. The securityProbe 5E has an easy-to-use web-based user interface for sensor configuration, data collection and extensive graphing. Complete SNMP functions such including SNMP v3 encryption are supported.

The securityProbe 5E also supports Modbus Master/Slave, Modbus RTU and Modbus over TCP/IP creating a unique, easy to configure Modbus to SNMP gateway. The web-based interface is written in PHP allowing end-user changes such as language translation. The securityProbe 5E has a battery backed time of day clock for accurate record keeping.

Architecture

- 8 full autosense RJ-45 ports
- 32-bit Xscale PXA270, 520 MHz Processor
- 128 Megabytes of SDRAM
- 8 Megabytes of nonvolatile flash memory
- Onboard SD card slot (comes with 2GB SD card installed)
- 10/100 Mbps Ethernet and 1 serial port
- 1x USB 1.1 port
- RS485 Ports
- Internal Audio Speaker
- 8 full autosense RJ-45 ports
- 4 x RJ45 Expansion Ports
- 20 Dry contact inputs

Applications

Connect up to 4 external analogue cameras

The securityProbe-X20 can display pictures from a maximum of four cameras simultaneously in several sizes, up to 640x480 pixels resolution.

Analogue cameras are the kind used in professional surveillance and CCTV monitoring systems. A built-in pan-tilt controller interface allows complete control of pan and tilt cameras using the industry standard Pelco D bus.

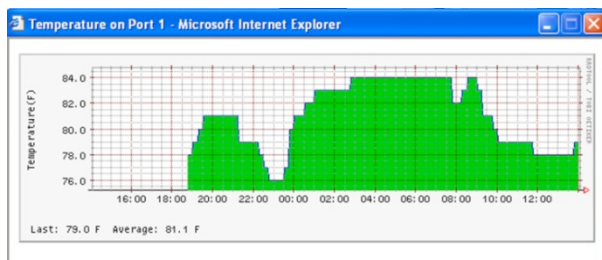
Sensor Graphing

The securityProbe 5E integrates and displays graphs of all sensor data in its web-based user interface. The individual graph (day, week, month and year) for each sensor type can be customized, simply by modifying the script template used to generate a particular graph. RRD tool is used to build an embedded database of sensor data.

This data can be accessed from the web interface, or downloaded to a remote PC. MRTG can be used to generate real-time graphs of sensor data on a remote website

False Message Filter

In order to prevent false alarms, the securityProbe-X20 allows extensive filtering of events. You can limit events based on the time of day or the day of the week. You can also limit the number of alerts per hour, so that you are not swamped with messages. This is especially important with the sensor like the motion detector where you may want to process an event only when the business premises are closed.



Sensor Integration & Notification System

Up to 8 of AKCP's intelligent sensors can be plugged into the RJ-45 ports of the securityProbe-X20. Once inserted, the sensor automatically configures itself and goes online. Our easy-to-use web based interface allows you to setup the securityProbe-X20 within minutes. When online, the sensors use their 4 levels of threshold checking and report any status change. Notifications and alarms can be dependent on the states of multiple sensors, and can be configured to escalate in severity over time.

The notification system can alert you of a problem via email, SMS messages and telephone calls, (additional hardware required), or send a message to any commercial network monitoring system using SNMP traps. The securityProbe-X20 can automatically switch a relay on or off, wake-up or shutdown a remote server, send pictures and data via FTP, send a FAX, run your custom script and many more versatile functions.

Email alerts can include a picture taken at the time of the event. All of the events are stored in the systems internal database; 23 pictures per event per camera can be recorded. Event details include the time and the sensor which triggered the event along with the sensor readings. The database can be easily reviewed using our built-in web based analysis system. All of the pictures are time stamped. The securityProbe-X20's system log can be integrated with third party tools for storage and examination.

The securityProbe 5E can automatically push out the complete status of the unit and sensors via the Heartbeat Message feature. This can be setup to be sent through e-mail, SMS or SNMP traps. A HTTP get script can also be chosen, allowing the data to be pushed to web servers.

Automatic Shutdown Feature

The securityProbe 5E has a built in Windows Operating system wake up and shut down feature that can be setup to automatically wake up or shut down computers and servers to save on power and also in the event of power failures.

Industry Certifications & Network Management Systems

AKCP offers NMS integration for leading network management systems such as:

AdRem NetCrunch
Quest Software – Big Brother
Castle Rock
HP OpenView

IBM Tivoli
Loriot Pro
Logalot
MRTG

SiteScope
Somis WebNM and Denika
WhatsUp Gold
Computer Associates Unicenter TNG

Dimension

- Size : 17.08" x 5.43" x 1.80"
- (camera dome height 3.62")
- Weight : 3.3 pounds

Power Requirements

- Voltage 7.0 - 9 V / >= 3 Amp

Power Consumption

- Typical 6.150 Watt, 0.82A

Inputs

- 8x RJ-45 ports for connecting AKCP sensors
- 4x RJ-45 Expansion ports
- 4x video Input ports VI-4, NTSC/PAL, BNC jacks 75 ohm 30 Au
- 1x USB port (Version1.1)
- 4x PTZ two pin Controllers
- Audio In (Analog) 3.5mm jack
- RS485, 2 pin Terminal box, (used for Modbus)
- 20x Dry Contact Inputs

Expansion Ports

- 4x individual RJ-45 expansion ports
- allows for quad directional placement
- 115.2K BPS data transfer rate
- Simultaneous functionality between expansion ports & RS485 port
- threshold status

Network Interface

- 1 Standard 10/100 Base-T Ethernet RJ-45 port

Status Indication

- LED indication for Power
- LED for Network Connectivity
- LED for sensor online and threshold status

Operating Environment

- Temperature : Min. -35° C - Max. +55° C
- Humidity : Min. 20% - Max. 80% (Non-Condensing)

MTBF

- 400,000 Hours

Expansion Modules

- 8 Port Intelligent Sensors Module (E-sensor8)
- 16 Port Dry Contacts Module (E-opto16)
- Extendable up to 1,000 Feet or 300 meters
- Expansion modules are daisy chainable

Mounting

- 1U Rack mount brackets included

Output

- Ext. Speaker Out, 3.5mm jack (Analog)
- Mic Out, 3.5mm jack (Analog) for modem application

Components

- Manufactured using highly integrated, low power surface mount technology to ensure long term reliability.
- 32-bit Xscale PXA270, 520 MHz Processor
- 8 MB Flash memory
- 128 MB SDRAM
- Internal on-board 2 GB SD Memory Slot Drive + Card

Support and Warranty

- One year limited warranty, Optional 2 year warranty.
- Unlimited lifetime support.
- Including all firmware updates
- Includes full, easy to understand documentation.

For more information, please take a look at our website, or contact Sales@akcp.com