



www.AKCP.com

Siren & Strobe Light Action Wizard

This tutorial provides you the information needed to setup a siren and strobe light action via the notification wizards.

To get to the starting point of this tutorial:

- Log in as administrator
- Click the “Notifications” tab

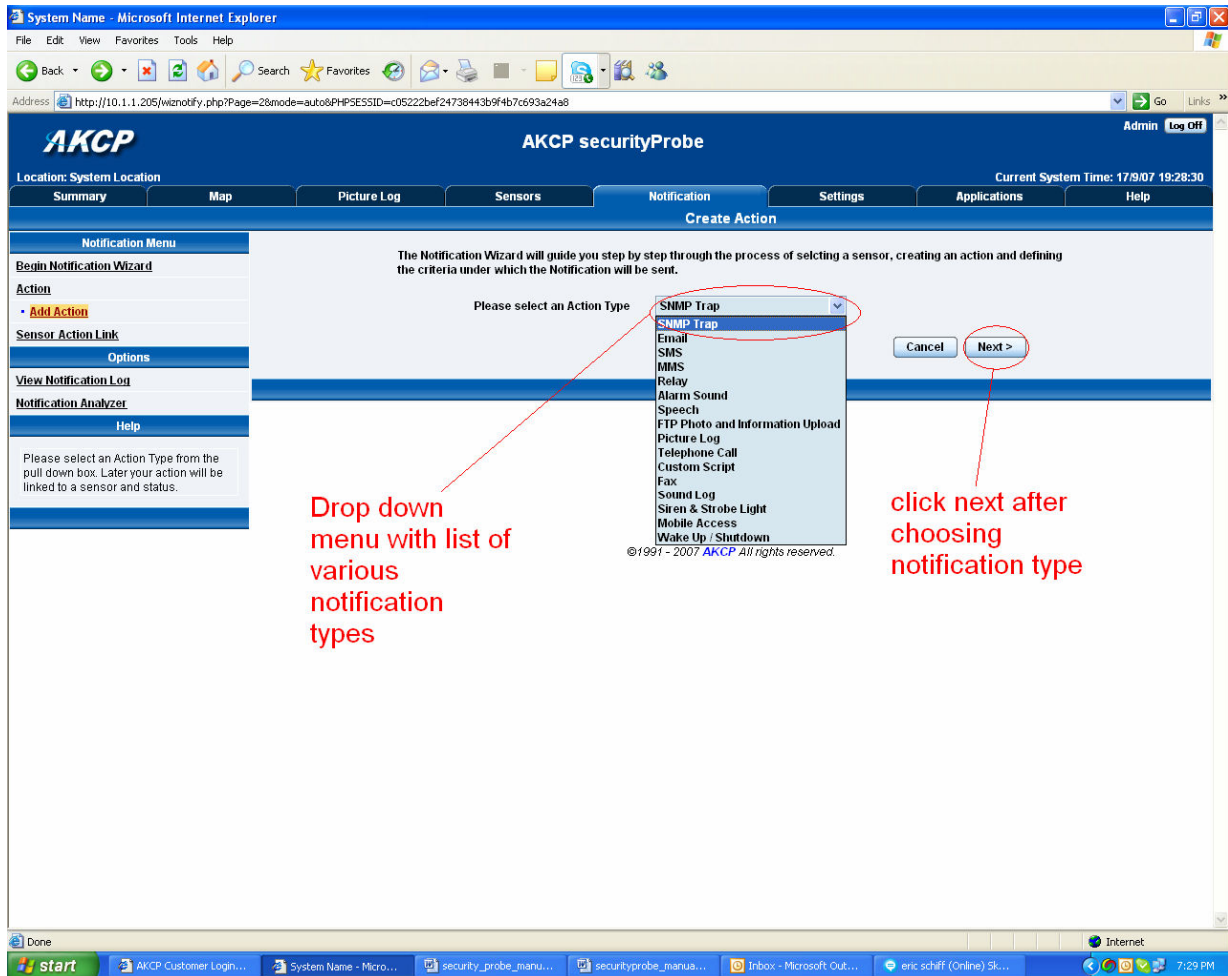
1. Adding a notification

a) First click on the “notification wizard”

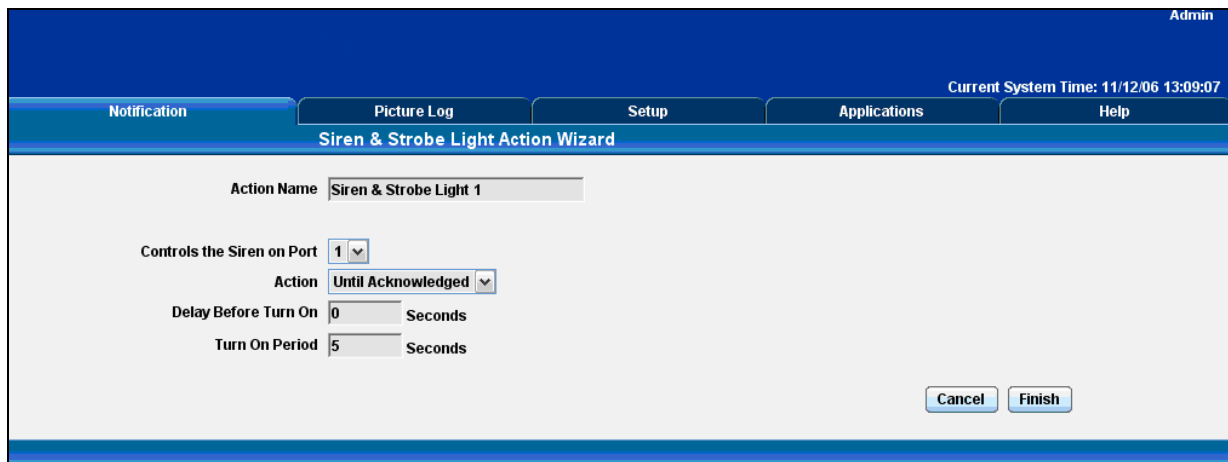
The screenshot shows the AKCP securityProbe web interface. The browser address bar shows `http://10.1.1.205/wizardify.php`. The page title is "System Name - Microsoft Internet Explorer". The interface has a blue header with the AKCP logo and "AKCP securityProbe". A red arrow points to the "Notification" tab in the top navigation bar, with the text "Click notification tab". Below the navigation bar, there is a "Notification Menu" on the left with a red circle around the "Begin Notification Wizard" link. A red arrow points from this link to a red text box that says "Click here to begin setting up a notification". The main content area shows a table of actions with columns "Action Type" and "Action Name". The table lists various actions like SNMP Trap, Email, Alarm Sound, Speech, and Picture Log. At the bottom of the table, there are buttons for "Create", "Duplicate", "Edit", "Remove", and "Test Action". The footer of the page says "©1991 - 2007 AKCP All rights reserved."

Action Type	Action Name
SNMP Trap	SNMP Trap 1
SNMP Trap	SNMP Trap 2
SNMP Trap	SNMP Trap 3
SNMP Trap	SNMP Trap 4
SNMP Trap	SNMP Trap 5
SNMP Trap	SNMP Trap 6
Email	Email 1
Email	Email 2
Email	Email 3
Alarm Sound	Alarm Sound 1
Alarm Sound	Alarm Sound 2
Speech	Speech 1
Speech	Speech 2
Speech	Speech 3
Picture Log	Picture Log 1

b) You will now have the notification wizard page displayed, like below.



c) Select siren and strobe light action from the notification type options.



Please choose a name for your **Siren and Strobe Light** Action. Descriptive Action names increase the simplicity of the system.

Select the Port your Siren and Strobe light is connected to and the length of time the light is on. You may choose Until Acknowledged or a Defined Time.

If you select a Defined time also enter the Delay before Turn On and the Length of Time the light is on.

Click **Finish** to Save your Action