

Sensor Control...
Access Control...

securityProbe 5E

SNMP-based Environmental and Security Monitoring Solution



E-sensor8

E-opto16



Applications

Monitoring Solution for :-

- Data Center & Server Rooms
- Telecommunication Room
- Network Equipment
- Remote ATM
- Backup Power & Generators
- Air Conditioning
- Cryogenics & Food industry
- Warehousing
- Medical & Pharmaceutical applications
- Server Rack Monitoring
- Building & Real estate Management
- Power Monitoring

Is your system designed to control the unpredictable?
Does maintaining your infrastructure keep you on edge?

securityProbe 5E will monitor the physical environment and alert you of any disturbances, such as unauthorized intruders, security breaches, high temperatures, smoke, water leakages, power outages and much more. Compatible with all of the AKCP range of Intelligent sensors it provides a complete environmental and security monitoring solution



Up to 4 remote controlled pan-and-tilt cameras, combined with the securityProbe 5E's software motion detection and a rich notification suite keeps you up to date at all times. E-mail, SMS, telephone call, web-browser, and other channels are available wherever you are, 24/7.

Features

- Full SNMP v1 v2 and v3 Compliant
- Email Notification
- Web Enabled - Embedded web server
- NMS Integration
- SNMP trap notification
- Connect 4 external cameras
- 80 Virtual Sensors
- Built-in Graphing and Logging
- Platform Independent
- New faster CPU
- Built-in Pan tilt controller
- Supports Modbus Built in Nagios
- Expandable function with additional Sensor & Dry Contact Modules

securityProbe 5E



Features

- Embedded web server displays sensor information and live video from connected cameras.
- Control PT cameras directly from the web interface.
- Record streaming video directly to remote servers or internal memory, or send live images to your own website.
- Connect up to 4 external cameras, and simultaneously display images up to 640x480 pixels resolution.
- Receive notifications of anomalous events via email, SMS / MMS, SNMP traps, and many more.
- Integrates with network management systems via SNMPv1 and encrypted SNMPv3.
- Stream video and sensor information directly to your cellphone or PDA.
- Ability to connect external GPRS/GSM modem, Bluetooth and WiFi USB adapters.
- Uses Linux operating system for maximum stability and flexibility.
- Virtual Sensors Feature to monitor power, Modbus, network devices, and other SNMP based equipment.
- Built-in graphing and data logging, internally or to a remote PC.
- Platform independent; free firmware upgrades and utilities from AKCP.
- Monitor up to 600 intelligent sensors using expansion modules (E-Opto 16 and E-sensor 8)
- Compatible with complete range of AKCP Intelligent sensors
- Full Modbus support : Modbus Master/Slave, Modbus RTU, Modbus over TCP/IP

The securityProbe 5E has a Linux Operating System running with 520MHz CPU, 8 Megabytes of Flash memory and 128 Megabytes of SDRAM. An additional 2 Gigabytes SD card is installed to provide greater storage capacity. It is TCP/IP compliant and runs lighttpd web server including https (SSL), Bash, Perl, vi, Telnet, PHP, Email and Nagios. The securityProbe 5E has an easy-to-use web-based user interface for sensor configuration, data collection and extensive graphing. Complete SNMP functions such including SNMP v3 encryption are supported.

The securityProbe 5E also supports Modbus Master/Slave, Modbus RTU and Modbus over TCP/IP creating a unique, easy to configure Modbus to SNMP gateway. The web-based interface is written in PHP allowing end-user changes such as language translation. The securityProbe 5E has a battery backed time of day clock for accurate record keeping.

Architecture

- 32-bit Xscale PXA270, 520 MHz Processor
- 128 Megabytes of SDRAM
- 8 Megabytes of nonvolatile flash memory
- Onboard SD card slot (comes with 2GB SD card installed)
- 10/100 Mbps Ethernet
- 1x USB 1.1 port
- RS485 Ports
- Internal Audio Speaker and microphone
- 8 full autosense RJ-45 Ports
- 4x RJ45 Expansion Ports



Applications

Connect up to 4 external cameras

The securityProbe 5E can display pictures from a maximum of four cameras simultaneously in several sizes, up to 640x480 pixels resolution.

Cameras, the kind used in professional surveillance and CCTV monitoring systems. A built-in pan-tilt controller interface allows complete control of pan and tilt cameras using the industry standard Pelco D bus.

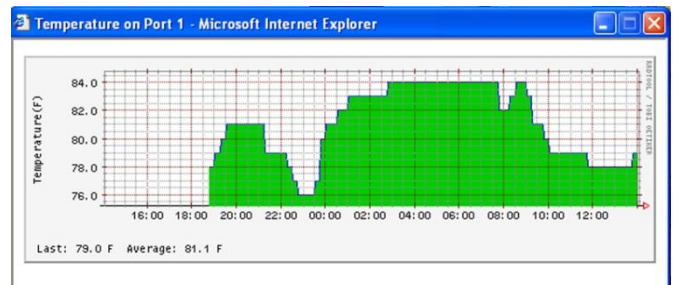
False Message Filter

In order to prevent false alarms, the securityProbe 5E allows extensive filtering of events. You can limit events based on the time of day or the day of the week. You can also limit the number of alerts per hour, so that you are not swamped with messages. This is especially important with the sensor like the motion detector where you may want to process an event only when the business premises are closed.

Sensor Graphing

The securityProbe 5E integrates and displays graphs of all sensor data in its web-based user interface. The individual graph (day, week, month and year) for each sensor type can be customized, simply by modifying the script template used to generate a particular graph. RRD tool is used to build an embedded database of sensor data.

This data can be accessed from the web interface, or downloaded to a remote PC. MRTG can be used to generate real-time graphs of sensor data on a remote website

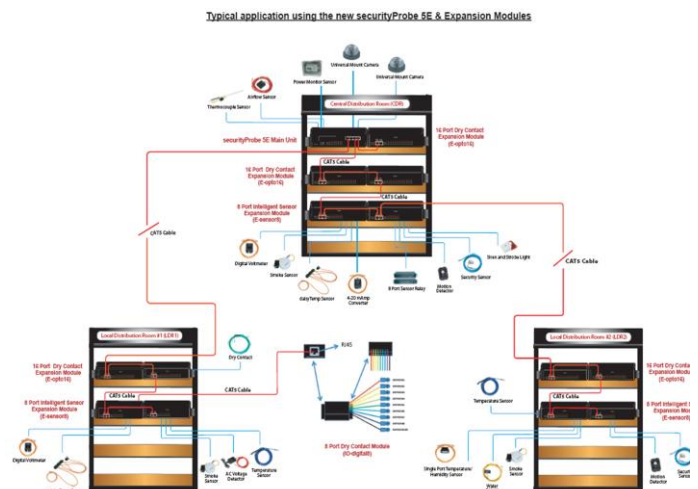


Sensor Integration & Notification System

Up to 8 of AKCP's intelligent sensors can be connected to the securityProbe 5E. When plugged in, the sensor automatically configures itself and goes online. Using the either the E-sensor 8, or the E-opto 16 expansion modules, up to 600 sensors can be connected to a single unit. Our easy-to-use web based interface allows you to setup the securityProbe 5E within minutes. When online, the sensors use their 4 levels of threshold checking and report any status change.

Notifications and alarms can be dependent on the states of multiple sensors, and can be configured to escalate in severity over time. The notification system can alert you of a problem via email, SMS messages and telephone calls, (additional hardware required), or send a message to any commercial network monitoring system using SNMP traps. The securityProbe 5E can automatically switch a relay on or off, wake-up or shutdown a remote server, send pictures and data via FTP, send a FAX, run your custom script and many more versatile functions.

The securityProbe 5E can automatically push out the complete status of the unit and sensors via the Heartbeat Message feature. This can be setup to be sent through e-mail, SMS or SNMP traps. A HTTP get script can also be chosen, allowing the data to be pushed to web servers.



Industry Certifications & Network Management Systems

AKCP offers NMS integration for leading network management systems such as:

AdRem NetCrunch
Quest Software – Big Brother
Castle Rock
HP OpenView

IBM Tivoli
Loriot Pro
Logalot
MRTG

SiteScope
Somis WebNM and Denika
WhatsUp Gold
Computer Associates Unicenter TNG

Specifications

Dimension

- Size : 8.5" x 5.43" x 1.80"
- (camera dome height 3.62")
- Weight : 2.4 pounds

Power Requirements

- Voltage 7.0 - 9 VDC, 3 Amp

Power Consumption

- Typical 6.150 Watt, 0.82A

Inputs

- 8x RJ-45 ports for connecting AKCP sensors
- 4x RJ-45 Expansion ports
- 4x video Input ports VI-4, NTSC/PAL, BNC jacks 75 Ohm 30 Au
- 1x USB port (Version1.1)
- 4x PTZ two pin Controllers
- Audio In (Analog) 2.5" jack
- RS485, 2 pin Terminal box, (used for Modbus)

Expansion Ports

- 4x individual RJ-45 expansion ports allows for quad directional placement
- 115.2K BPS data transfer rate
- Simultaneous functionality between expansion ports & RS485 port
- threshold status

Network Interface

- 1 Standard 10/100 Base-T Ethernet RJ-45 port

Status Indication

- LED indication for Power
- LED for Network Connectivity
- LED for sensor online and threshold status

Operating Environment

- Temperature : Min. -35° C - Max. +55° C
- Humidity : Min. 20% - Max. 80% (Non-Condensing)

MTBF

- 400,000 Hours

Expansion Modules

- 8 Port Intelligent Sensors Module (E-sensor8)
- 16 Port Dry Contacts Module (E-opto16)
- Extendable up to 1,000 Feet or 300 meters
- Expansion modules are daisy chainable

Mounting

- Rack mount brackets included
- Compatible with AKCP's DIN and rackmount trays

Output

- Ext. Speaker Out, 2.5" jack (Analog)
- Mic Out, 2.5" jack (Analog)
- (for modem application)

Components

- Manufactured using highly integrated, low power surface mount technology to ensure long term reliability.
- 32-bit Xscale PXA270, 520 MHz Processor
- 8 MB Flash memory
- 128 MB SDRAM
- Internal on-board 2 GB SD Memory Slot Drive + Card

Your Distribution Partner:

Didactum® Ltd. Deutschland
Marsweg 17

48163 Muenster

Germany

Phone: +49.2501.9716355
Fax: +49.2501.9716356

eMail: info@didactum.com
Web: <http://www.didactum.com>

Support and Warranty

- One year limited warranty, Optional 2 year warranty.
- Unlimited lifetime support.
- Including all firmware updates
- Includes full, easy to understand documentation.