

IM4200 Infrastructure Manager



Anytime, Anywhere Remote Access

- **8, 16, 48 Port Models**
- **Dual 10/100 Ethernet**
- **Dual Power (AC or DC)**
- **Built-In Modem**
- **1U Rack Mountable**
- **USB Flash Drive**

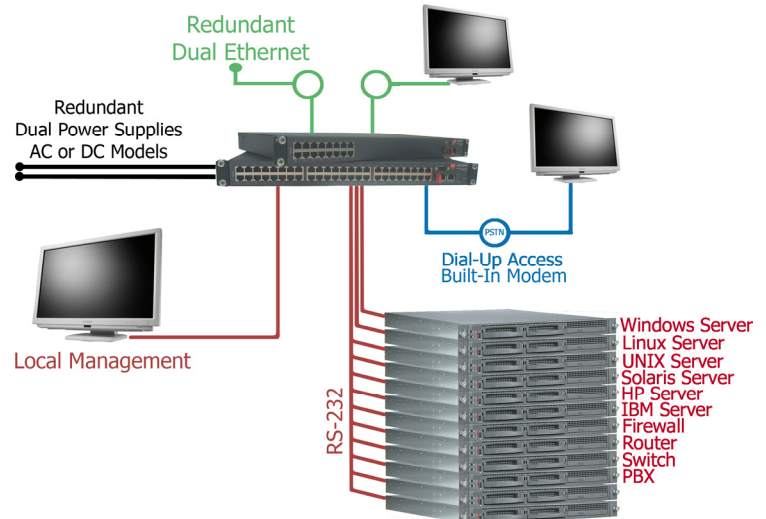
- ◆ Secure in-band and out-of-band serial console and Management LAN access
- ◆ Integrates with enterprise management OpenManage, Conserver, MO, Openview
- ◆ Local or remote access to headless servers (IPMI, RSA, iLO, LOM) and network devices
- ◆ Secure remote power management of serial LAN and IPMI power strips
- ◆ Powerful yet flexible access controls ensure Compliance with enterprise policies
- ◆ Supports all management protocols (Telnet, SSH, HTTP, HTTPS, VNC, RDP, X and more)
- ◆ Configurable point-n-click SDTConnector client
- ◆ Simple Browser or Command line interface
- ◆ Windows RDP tunneling and EMS support
- ◆ Automated alerts and alarm management
- ◆ Multiplatform - Linux, Windows, Cisco, BSD, UNIX and Sun Compatible
- ◆ Rock solid stability

Redundant Network Management

The IM4200 family of Infrastructure Managers enables system administrators to securely access and control their data centers and networks from anywhere in the world. The IM4200 provides redundant and secure access to the serial console ports, embedded service processors and network console ports on Windows, Linux, SUN, HP and IBM servers. The IM4200 is equipped with Dual 10/100 Ethernet and Dual Power (AC or DC) for high availability and reduced downtime.

Remote Out of Band Access

The IM4200 console server can be remotely accessed in-band through dual 10/100 TCP/IP or out-of-band through a built-in modem. All connections are secure to remote systems using robust advanced encryption. The IM4200 is equipped with sophisticated monitoring, alerts, alarms with removable USB flash logs and embedded Nagios NSCA client – NRPE monitoring servers. Access can be restricted by IP address, password or account. Administrators can securely control and manage their distributed networks of servers and appliances using the latest in out-of-band console access.



Optimized for Infrastructure Management

The IM4200 is built on open source standards that utilize the strength, security and the broad manageability features of Linux. This robust, reliable open software technology has been optimized specifically for secure console management and remote control applications. The IM4200 couples this high quality software with a deeply integrated hardware design. The IM4200 is built on powerful ARM-based System on Chip technology with a low component count. This yields higher reliability, lower power consumption and leading network and cryptographic performance. As a result the IM4200 leads on features, performance, reliability and price

FEATURES

Security and Authentication

- Secure Shell (SSH V2)
- TACACS+, RADIUS and LDAP authentication
- PAP/CHAP authentication (dial up)
- Per port user access lists and dial back support
- Local authentication
- System event Syslog
- SSH port and IP forwarding support, IP aliasing
- IP packet filtering

Serial Console Port Management

- Windows 2003 Server EMS support
- SUN / Solaris ready (no inadvertent breaks)
- Break over SSH support
- Port monitoring, triggers and alarms
- Offline data logging (Syslog, NFS, CIFS)
- Online data buffering
- Multiple users per port (with port sniffing)
- Access by TCP port
- Telnet/SSH/Raw TCP connect
- Clustering

Tunneled LAN Port Management

- Secure SSH tunneling and NAT port redirection
- Secure RDP/VNC/X access to Windows /Linux/Sun
- Secure HTTP/HTTPS to browser controlled appliances
- Secure Telnet /SSH access
- Service processor access (IPMI, ILO, LOM, RSA)
- Extensible to support custom services /ports
- Configurable point-n-click SDTConnector client
- User access limited by host, and by SDT service
- Unlimited number of LAN computers/appliances
- Unlimited number of connections per SSH session

IM4200 System Management

- Secure Web management (HTTPS)
- Local browser management (HTTP)
- Command Line interface (Linux Shell)
- ARP-PING (IP assignment)
- SNMP and email alerts

Other Protocols Supported

- DHCP for dynamic IP assignment
- NTP for time synchronization
- PPP for dial up access
- NAT port redirection
- RFC2217- Port Redirection

Upgrades

- Flash upgradeable - free from online FTP site
- FTP, TFTP client for file transfer

Technical Specifications

Models

IM4208-X: 8 RJ-45 RS-232 serial port (2400 to 230,400bps)
 IM4216-X: 16 RJ-45 RS-232 serial ports (2400 to 230,400bps)
 IM4248-X: 48 RJ-45 RS-232 serial ports (2400 to 230,400bps)
 1 DB-9 RS-232 local / modem port (2400 to 115,200 bps)
 2 RJ-45 10/100 Ethernet ports
 1 RJ-11 V.92 Modem
 1 USB-2 Port

Cables Included

2 RJ-45 CAT5 cables (6 ft)
 2 RJ-45 to DB-9 adapters (straight & cross-over)

Environmental

Ambient operating: 5°C to 50°C (41°F to 122°F)
 Storage: -30°C to +60°C (-20°F to +140°F)
 Humidity: 5% to 90%

Regulatory

FCC Part 15 A UL 1950 TUV C-Tick
 CE (EN55022 A, EN55024, EN60950) ROHS

Power, Size & Weight

AC - Internal dual socket universal 100-240V AC
 DC - Dual 48V External +/- 48VDC
 Power Consumption less than 30W
 17 x 12.3 x 1.75 in (44 x 31.3 x 4.5 cm), 11.8 lb (5.4 kg)

CPU/Memory

166MHz ARM (Micrel KS8695P)
 64MB SDRAM
 16MB embedded flash, 512MB USB flash

MTBF

IM4208/IM4216/4248: 150,000



Additional Warranty Packages Available

USA	UK	EU	Serial Ports	Dual AC	Dual DC	Warranty
IM4208-2-DAC-US	IM4208-2-DAC-UK	IM4208-2-DAC-EU	8	◆		4 Years
IM4208-2-DDC	IM4208-2-DDC	IM4208-2-DDC	8		◆	4 Years
IM4216-2-DAC-US	IM4216-2-DAC-UK	IM4216-2-DAC-EU	16	◆		4 Years
IM4216-2-DDC	IM4216-2-DDC	IM4216-2-DDC	16		◆	4 Years
IM4248-2-DAC-US	IM4248-2-DAC-UK	IM4248-2-DAC-EU	48	◆		4 Years
IM4248-2-DDC	IM4248-2-DDC	IM4248-2-DDC	48		◆	4 Years